

Advantage by corporate organisation and structure:

## ETMS Corporate Advantage



A Joint Venture of  
**ATLAS ELEKTRONIK** and **THALES**  
A joint company of ThyssenKrupp and EADS

### The Company

**ET Marinesysteme is a joint venture of ATLAS ELEKTRONIK – a company that includes the naval division of EADS Germany since January 2007 – and THALES, founded in 2001 by EADS and THALES to improve the success of the programmes EADS and THALES jointly work at.**

As a management company ETMS owns all the resources necessary to manage big Naval System programmes, backed up by the knowledge and strength of two worldwide well known players in the defence market. ETMS combines the power

of ATLAS ELEKTRONIK and THALES with the flexibility of a management company based in highly qualified and motivated engineers as well as on a very modern company infrastructure. ETMS is strictly orientated on the requirements of its customers, working out best solutions within budget for them.

ETMS is located at the North Sea coast in the city of Wilhelmshaven – the main base of the German Navy.

### Advantage

**ETMS** owns all the resources necessary to manage big Naval System programs.

**ETMS** combines the power of

**ATLAS ELEKTRONIK** and **THALES** with the flexibility of a management company.

**ETMS** is backed up by the knowledge and strength of two worldwide well known players in the defense market.

**ETMS** is based on highly qualified and motivated engineers as well as on a very modern company infrastructure.

**ETMS** is strictly orientated on the requirements of its customers, working out best solutions within budget and time for them.

**ETMS** ensures a high level of quality.



## EINS-5 ETMS Integrated Navigation Suite 2005 AIS/ECDIS/NavRADAR



ET Marinesysteme GmbH  
Bontekai 55  
D-26382 Wilhelmshaven  
Germany

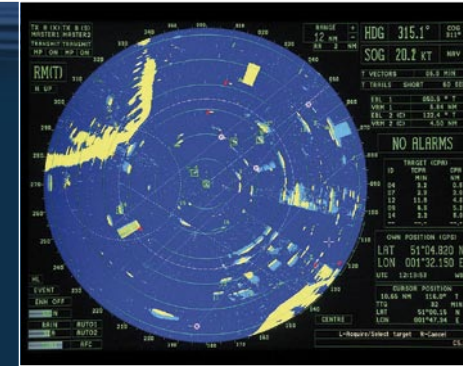
[www.et-marinesysteme.com](http://www.et-marinesysteme.com)

A Joint Venture of  
**ATLAS ELEKTRONIK** and **THALES**  
A joint company of ThyssenKrupp and EADS

Advantage by concept:  
**Integrating  
Navigation Systems.**



Advantage by technology:  
**Features and  
Technology**



**Integration features include:**

- switching between different navigation radar displays (when two or more radars are installed)
- radar video overlay on every ECDIS display
- full control of AIS from the ECDIS display, fully replacing the AIS MKD (level 4 integration)
- open interface of the EINS-5 to supply peripheral systems via an Ethernet intranet with ECDIS, ARPA and AIS information in accordance with the NMEA 0183 protocol
- integration of an asynchronous tactical radar video on the navigation radar display (if required)
- integration with and upgrade of an existing navigation radar (if required)
- target tracking capacity: 100 vessels min
- integration of already present sensors (RADAR, GPS, log, etc.)
- German Navy-approved consoles
- Environmentally approved consoles:
  - shock
  - vibration
  - EMC
  - magnetic
- RADAR approved by US Coast Guard in accordance with: 165.155/8/0; IEC 61162; IEC 61993-2
- integrated Uninterruptable Power Supply (UPS)
- commercially available components
- one-stop individual support from analysis to start-up
- extensive documentation
- qualified training
- competent lifetime support (OEM-components subject to respective manufacturer's regulations)



Advantage by design:  
**User-centric  
approach.**

Conceptual Systems Integration based upon analysis and flexible solution development, targeting the specific and individual end-user situation.

Flexible intergration of installed sensors, while delivering an attractive upgrade path for future system needs.

**The Project EINS-5**

In 2005, ETMS gained the open competitive bidding to equip more than 100 units of the German Navy with EINS-5 (ETMS Integrated Navigation Suite 2005). EINS-5 includes state-of-the-art navigation radar(s), the electronic sea chart system ECDIS and the automatic identification system AIS

**EINS-5**

**Site survey**

ETMS, as supplier and integrator, are able to install our product EINS-5 for all different Navy units as well as old or new including training centres. Furthermore we are able to integrate several Sensors of Compass, GPS and LOG. Therefore a detailed investigation will be executed.

**Analysis / solution development**

In the beginning of the installation a detailed analysis will be executed with the following development with an exact system configuration for the complete Navigation site.

**Installation / integration / trails / acceptance**

We have the competence for the installation, integration on board including harbour and sea acceptance test.

Documentation release & user training / maintainer training

**Documentation release & user training / maintainer training**

User and maintainer training, as well as the handling of the documentation will be provided after completion of the trail/acceptance procedure.

**Maintenance / service**


Maintenance and service for our product is one of our strength worlds wide.

**Life cycle support**

Life cycle support for all our products will be provided through the installed configuration management in order to identify efficiently all main components of the EINS-5 system.



**SCALABLE SOLUTIONS**



Tailor-fit concepts for integrating AIS/ECDIS depending on vessel-size, usable navigation equipment, accommodation space and considering the overall system environment.